

# Improving Access to Out-of-School Opportunities using Data Science

Karen Lavi, Joseph A. Abbate, Jose M. Hernandez, Sreekanth Krishnaiah, Kellie J. MacPhee, Andrew M. Taylor, Sivan Tuchman and Haowen Zheng  
Data Science for Social Good, eScience Institute, University of Washington, Seattle, WA.

## 1 Introduction

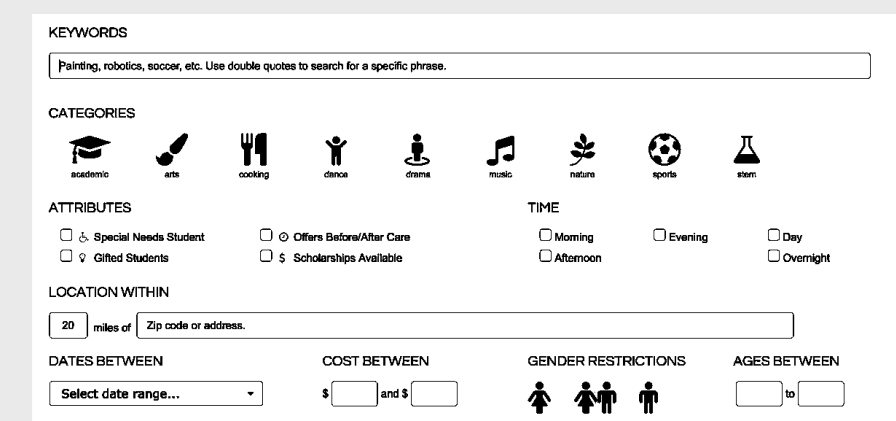
During summer vacation, students lose on average a whole month of knowledge on a grade-level equivalent scale ('Summer Slide'). Summer programs (e.g. arts, sports) help reduce this slide.

"ReSchool Colorado", a Denver-based non-profit, exists to solve this problem: to ensure students have access not only to a quality in-school education, but also opportunities for out-of-school learning, growth, and enjoyment. Last year ReSchool released its "Blueprint4Summer" website. The site allows parents to quickly and easily search through summer extracurricular programs offered in Denver based on the type of program they're looking for, providing information like location, cost, and age range.

We partnered with ReSchool to help them better understand the distribution of programs within the city of Denver and assess if all Denver students have equal access to out of school resources.

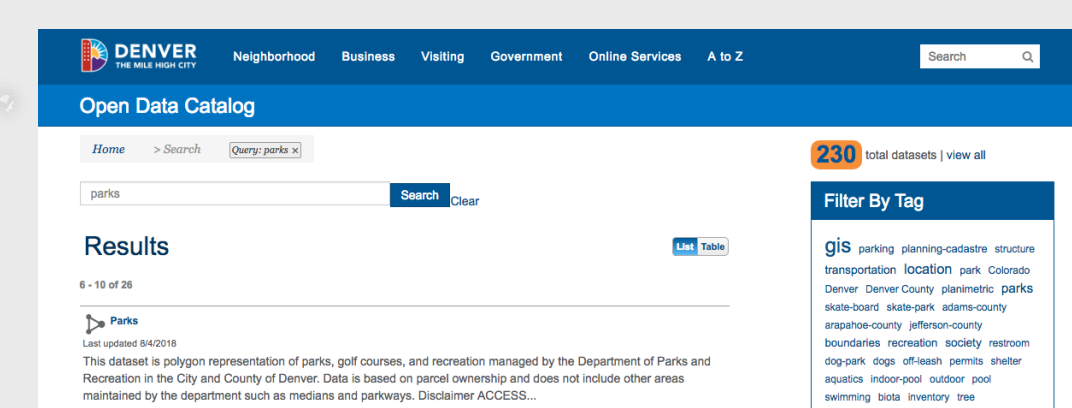
## 2 Data

### Blueprint4Summer:



Program and search data

### Denver Open Data



Parks, libraries, playgrounds, rec centers..

### Census Demographics

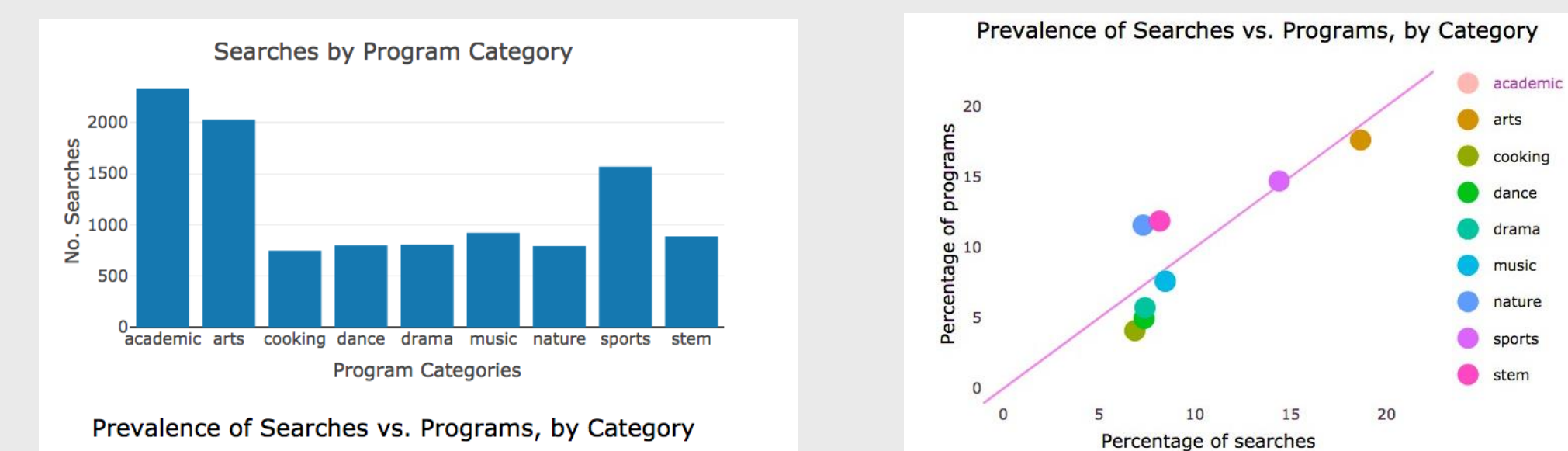
Median household income, race / ethnicity, education levels, age breakdowns, language besides English spoken at home

### Denver Public Schools

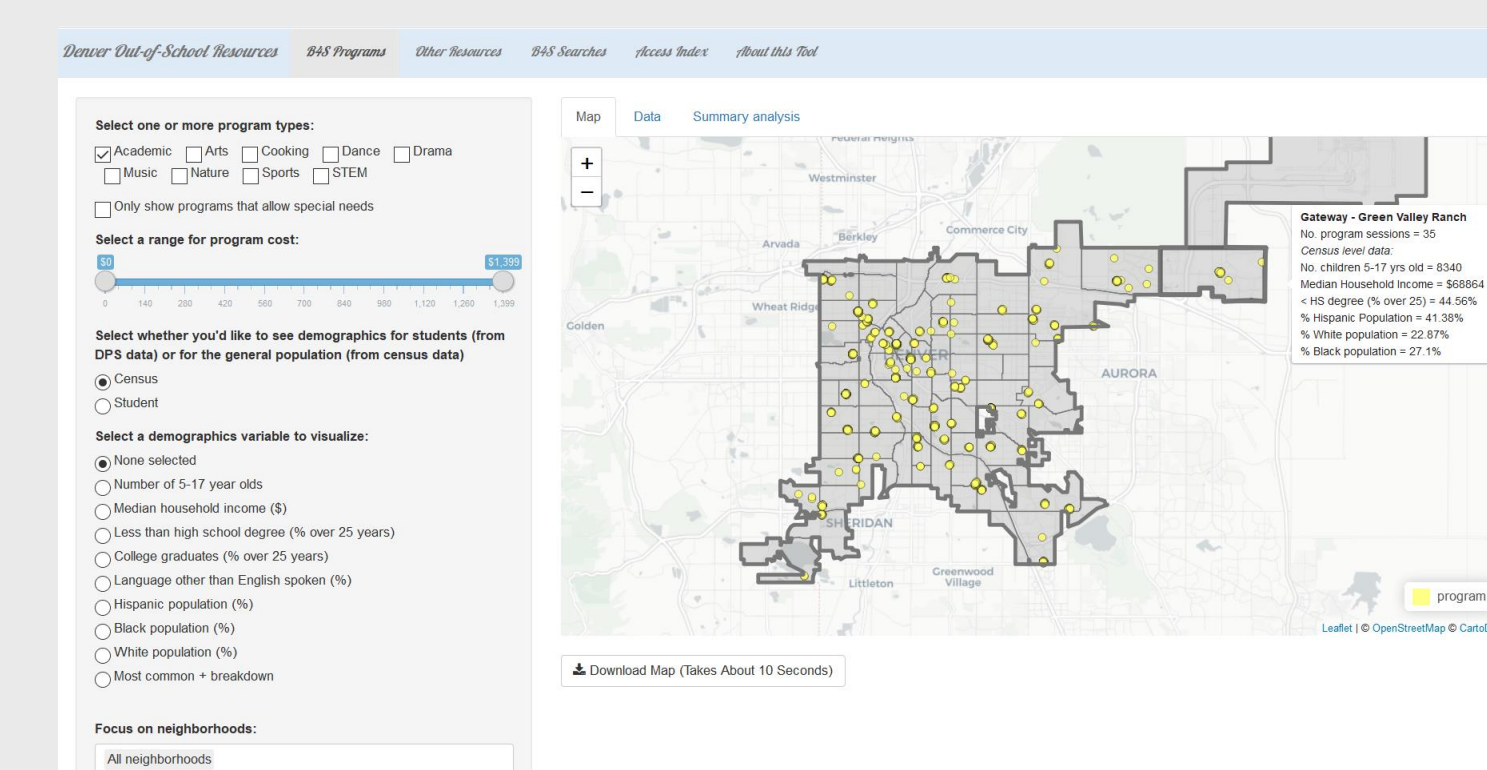
Student demographics (race/ethnicity, disabilities, English language learners)  
Approximate student locations (nearest census block group)

## 3 Insights

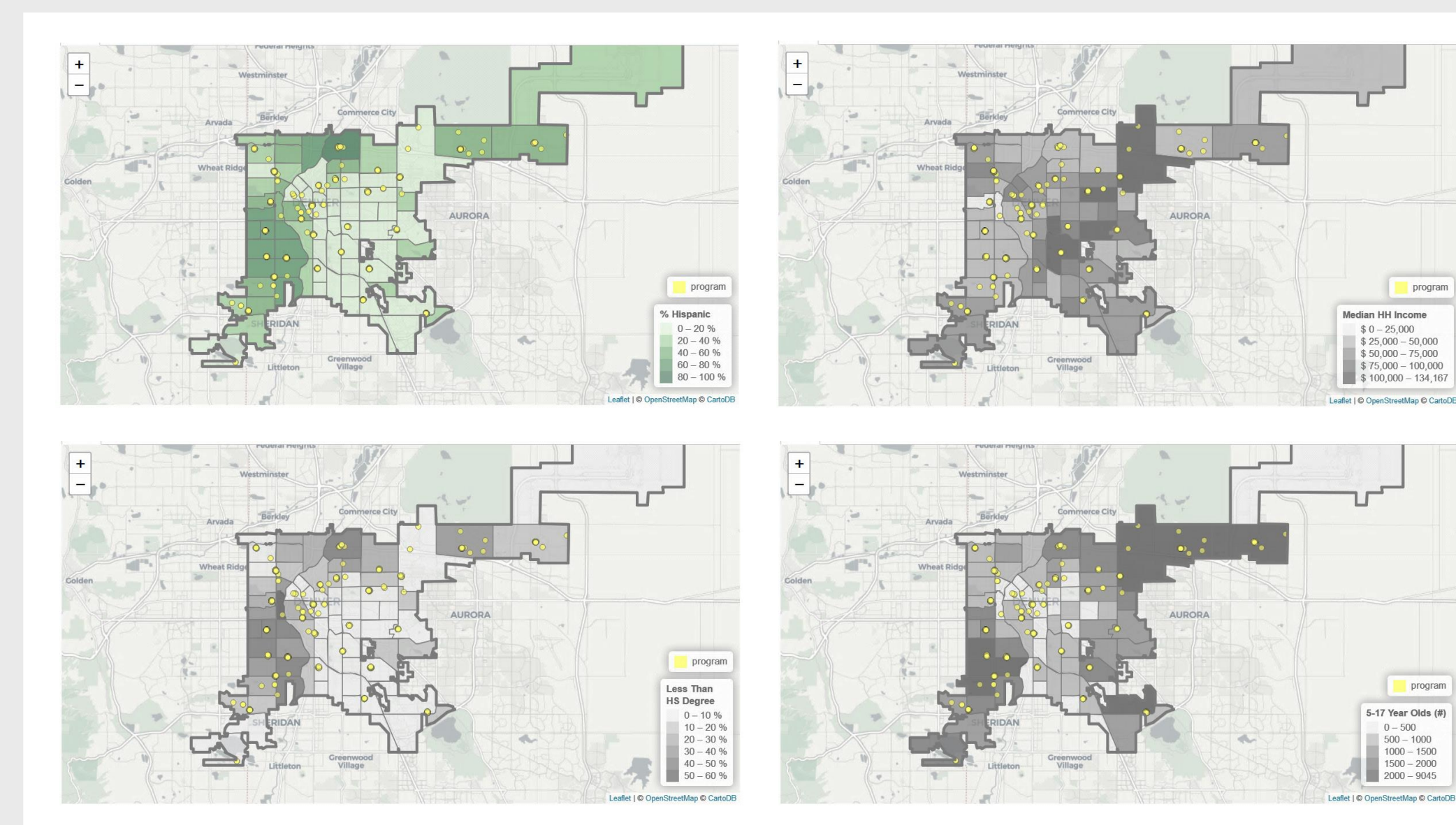
### What program categories do people search for the most?



### How are programs distributed in Denver?



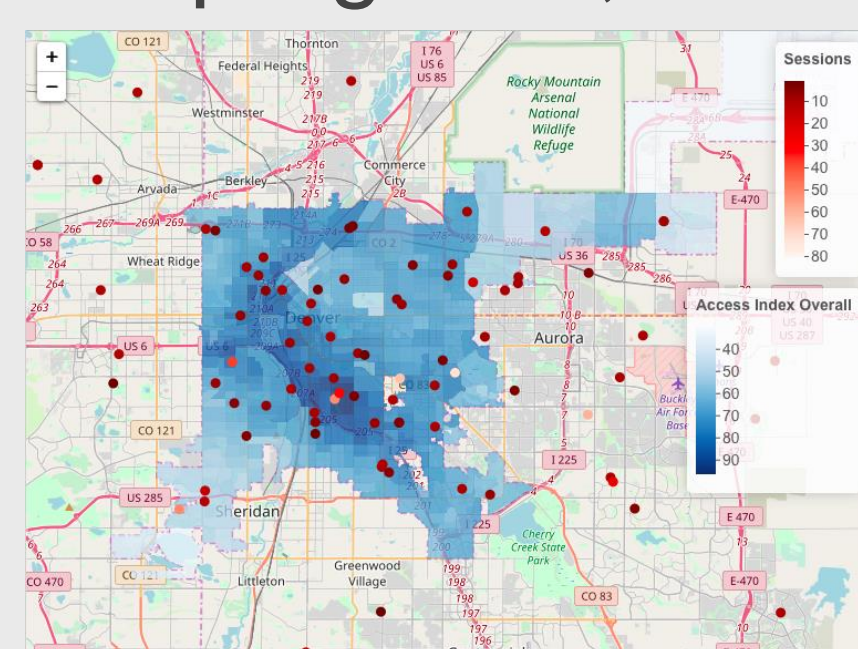
### Overdyed with demographics



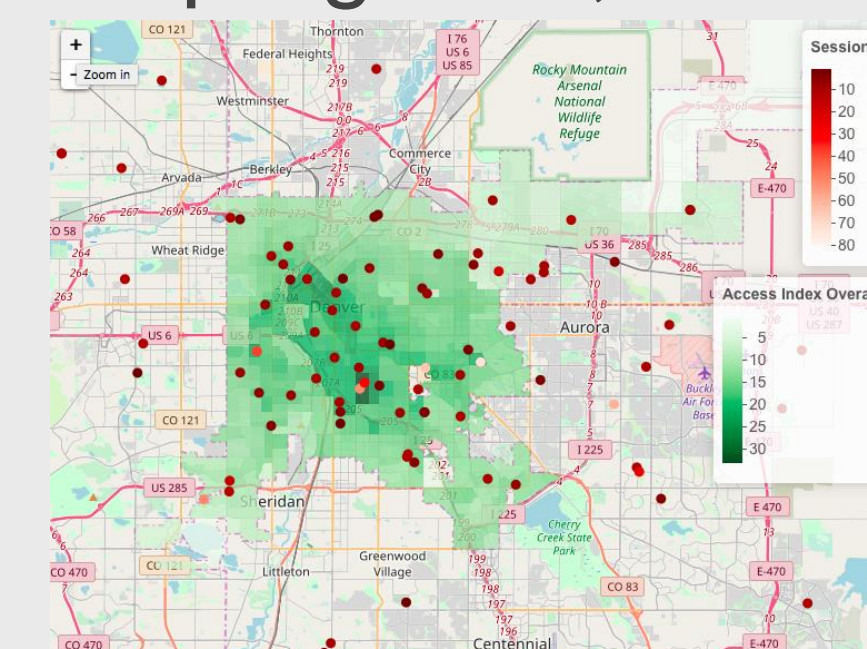
### Measuring Access to Summer Programs in Denver

$$A_{\text{block}}^{\text{type}}(\text{transit mode}) = \frac{1}{n_{\text{programs of type}}} \sum_{\text{programs of type}} f(\text{transit mode})$$

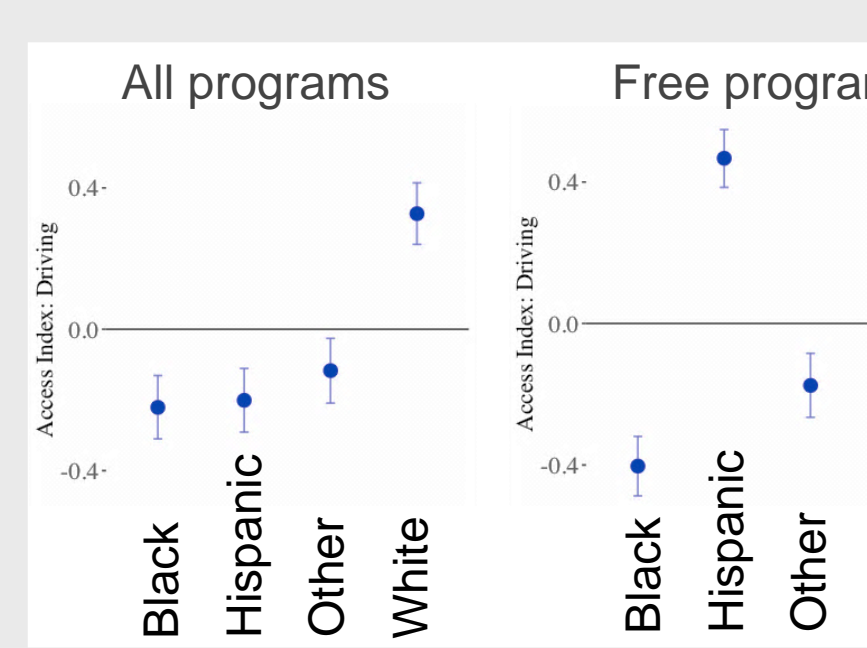
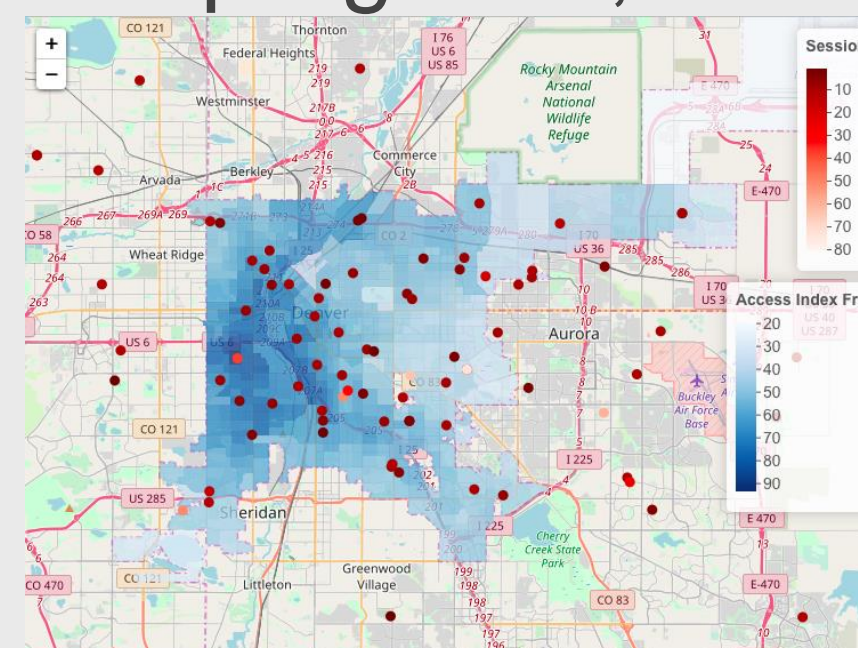
#### All programs, driving



#### all programs, transit

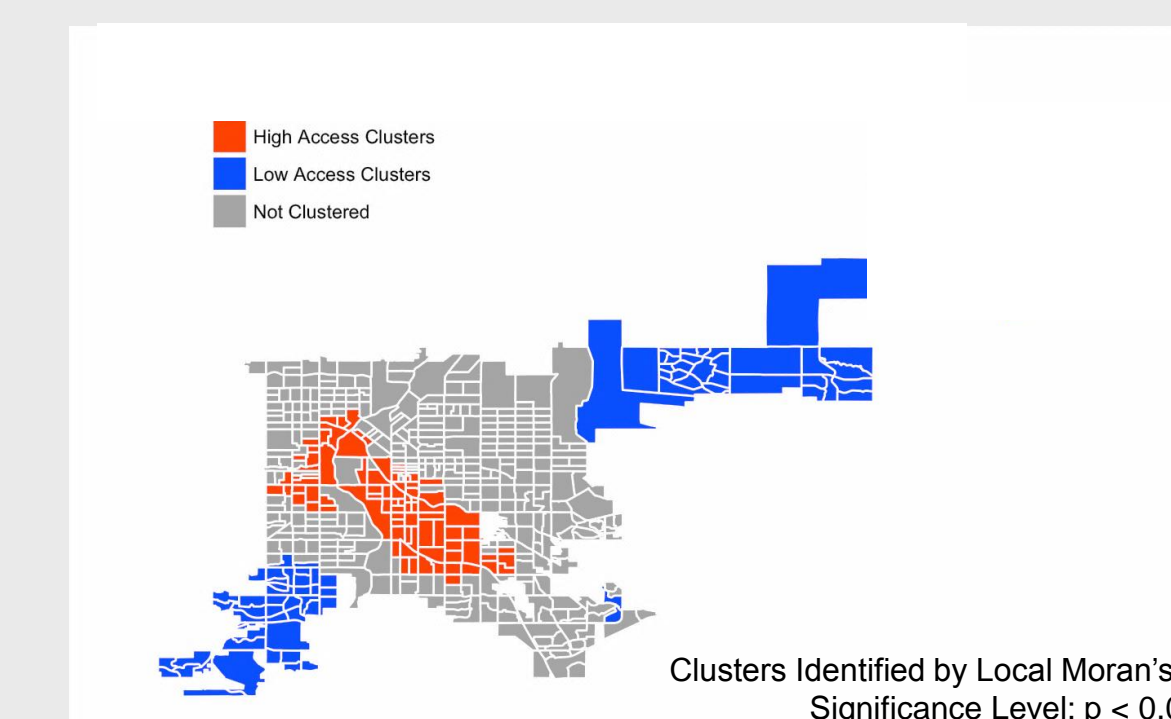


#### free programs, driving

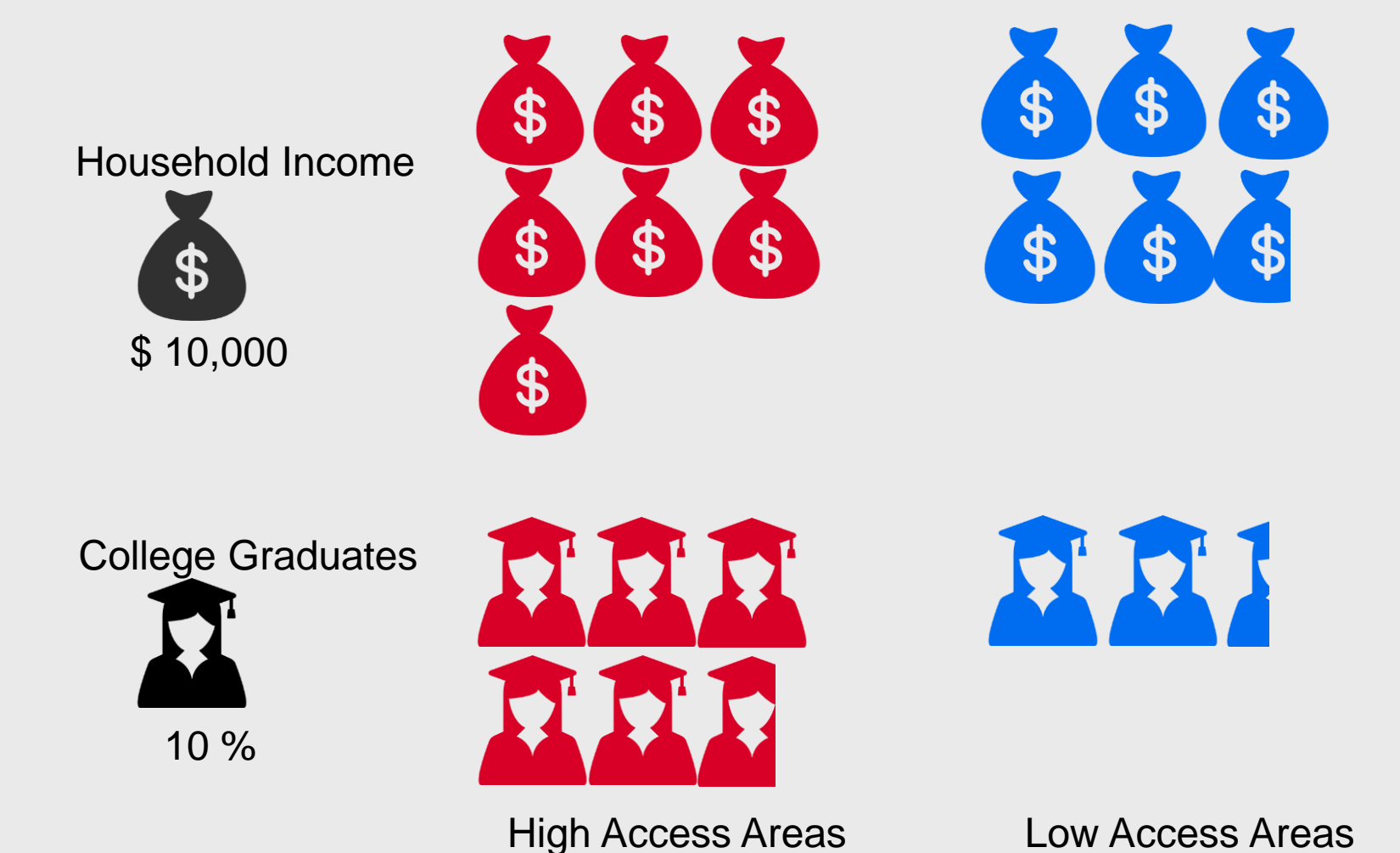
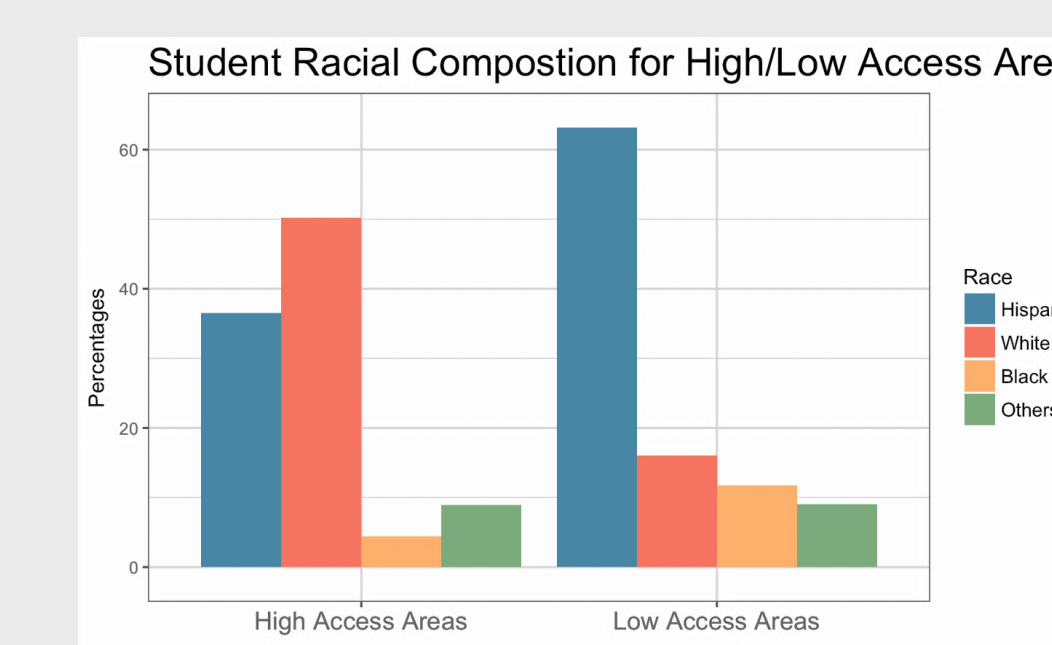


## 4 Insights – continued

### Which areas have high/low access?



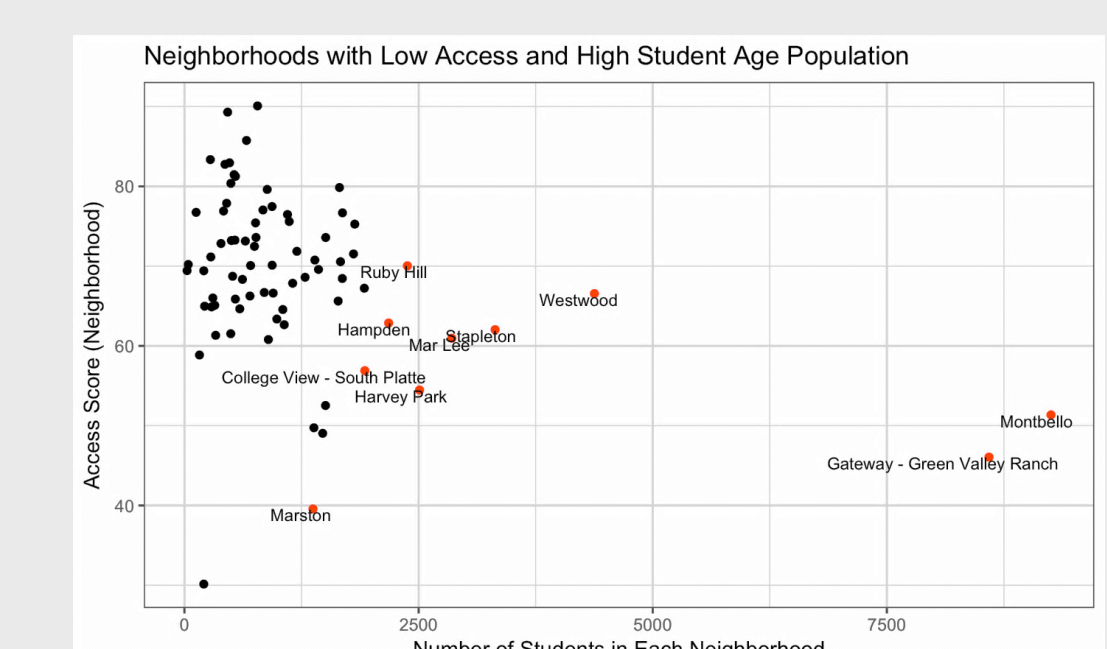
### Who is more likely to have high access?



### Access index by student race and program type

	All	Nature	Sports	Art	Academic	Free
Hispanic	63	64	54	68	67	56
White	68	70	63	70	68	50
Black	59	61	54	61	60	45
Other Races	62	64	57	65	64	49

### Equity of access



[https://github.com/CRPE-UWB/osr\\_dssg2018](https://github.com/CRPE-UWB/osr_dssg2018)

CASCADIA URBAN  
ANALYTICS COOPERATIVE

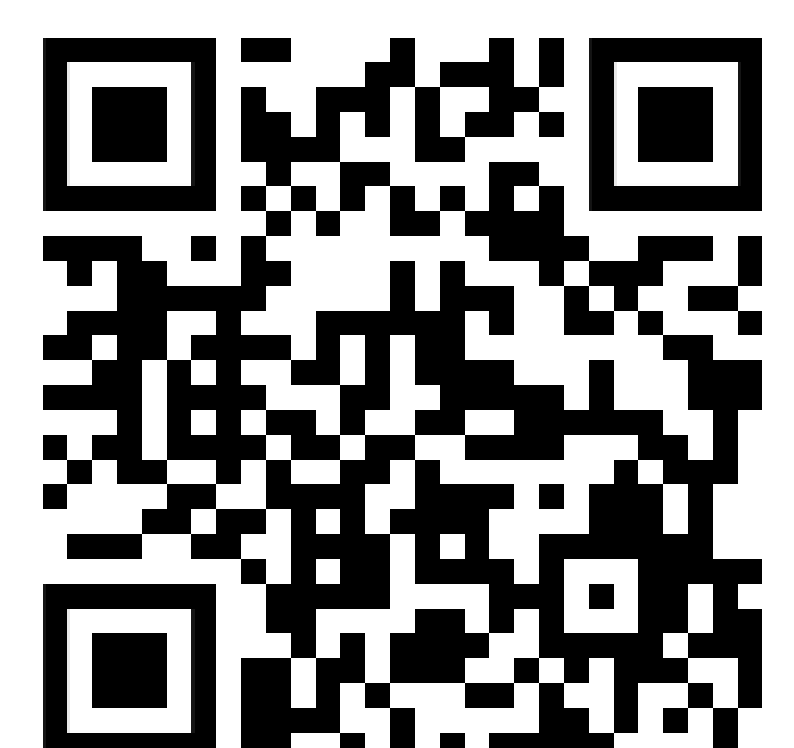
Urban@UW

Washington Research  
FOUNDATION

GORDON AND BETTY  
MOORE  
FOUNDATION



Microsoft



UNIVERSITY of WASHINGTON  
eScience Institute