

Feeding Northeast Florida: Finding Data-Driven Insights in the Fight Against Hunger



Community bank connecting food donors with distributors to ensure those in need have access to healthy meals.

Gaining Insights on Food Insecurity and Food Desert Regions

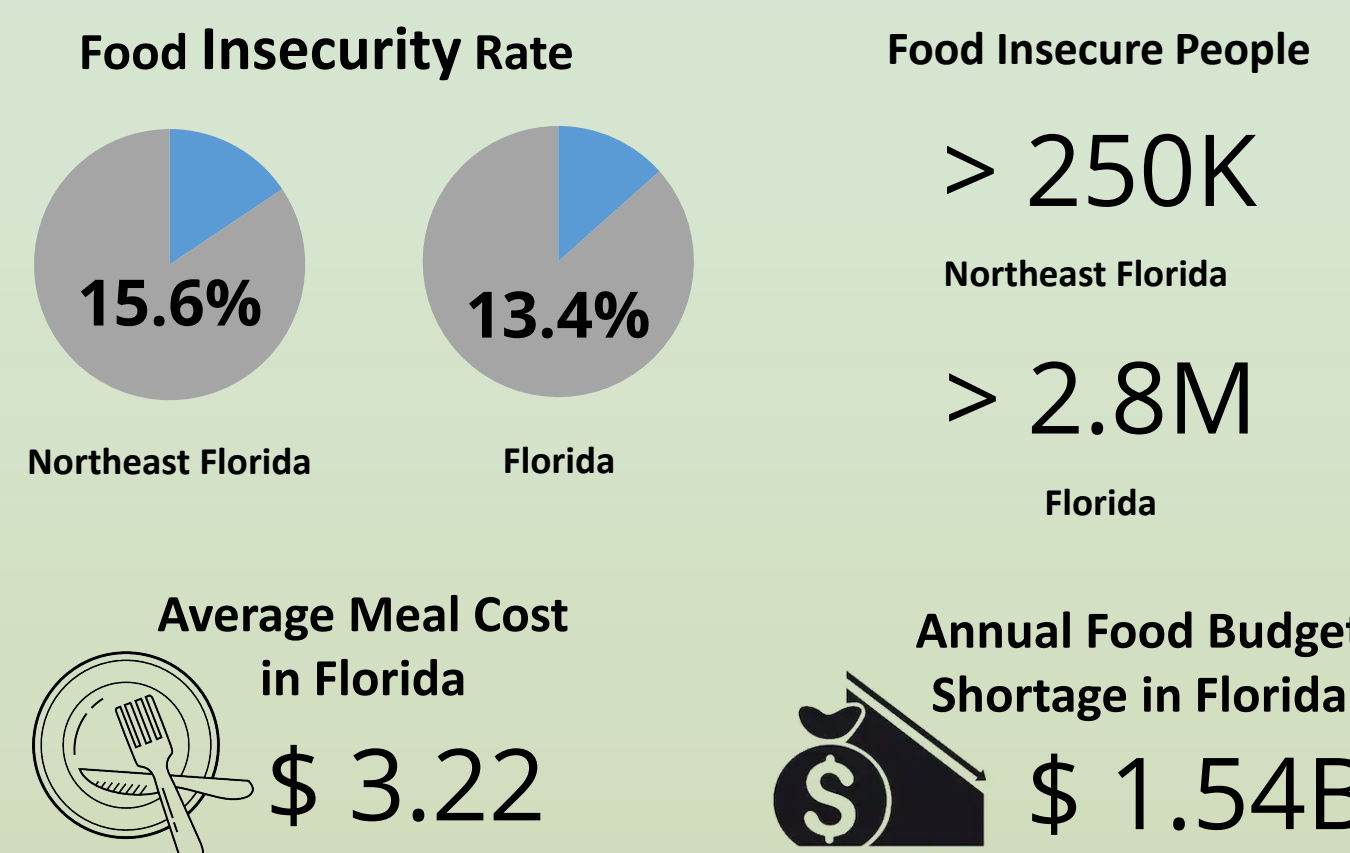
Transforming students into data scientists using collaborative community engaged projects.



Community Partner

Where: Serves 8 counties in Northeast Florida region
How: Partners with 150+ grocery stores, retailers, manufacturers, and farms
Who: A part of Feeding America, a network of 200+ food banks
What: Provided more than 14.1M meals in 2018

Map the Meal Gap (Meal-Gap, 2019)



Social Issue

Food insecurity is defined by the U.S. Department of Agriculture (USDA) as “a household-level economic and social condition of limited or uncertain access to adequate food” for an active and healthy life (USDA-ERS, 2019a).

Food desert is defined by the USDA as low-income neighborhoods where a significant number of residents have limited access to healthy and affordable food sources (USDA-ERS, 2019b).

Low-income

Areas with

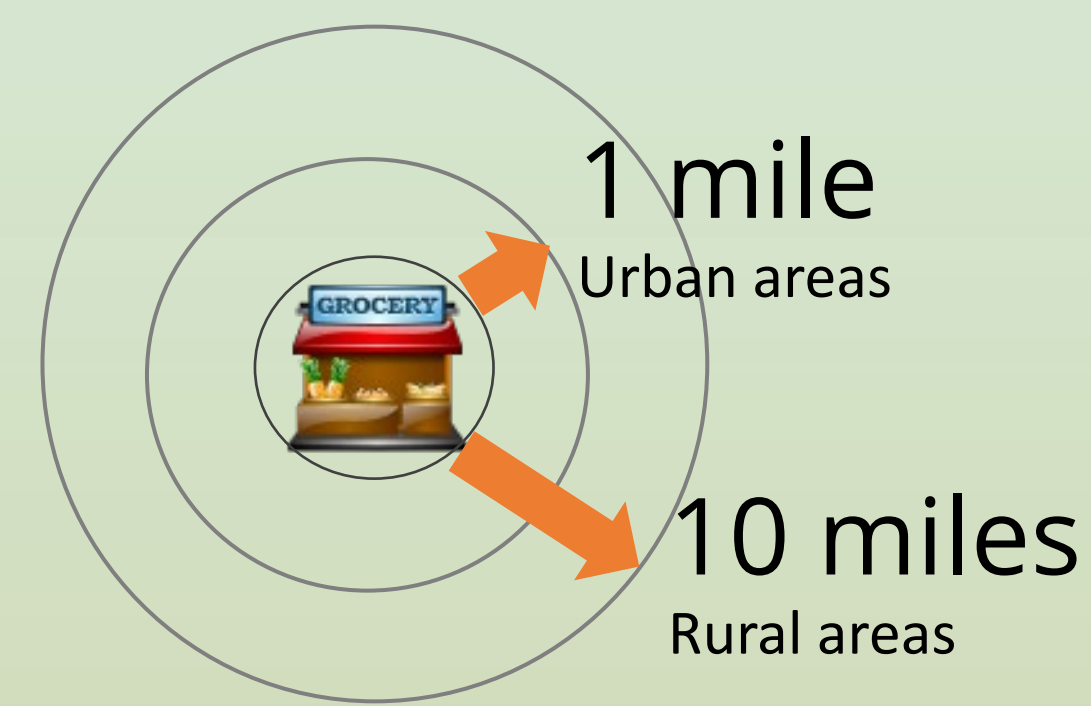
- ≥ 20% Poverty Rate

or Areas with residents median family income

- ≤ 80% State-wide median family income

Low-access

Measured as distance to healthy food access from a supermarket, supercenter, or large grocery store.



UNF

UNF Foundation funds 2019 program

Projects from nonprofits and government agencies

Local data scientists coach interns on best practices

UNF faculty provide subject-matter expertise

12 weeks summer internship

- Problem understanding
 - Research inquiry
 - Data preparation
- June**
- Statistical analysis
 - Data modeling and mining
 - Data visualization
- July**
- Dashboard development
 - Storytelling (The Big Reveal)
 - Project report
- August**

Problem

Our Approach

Dashboard

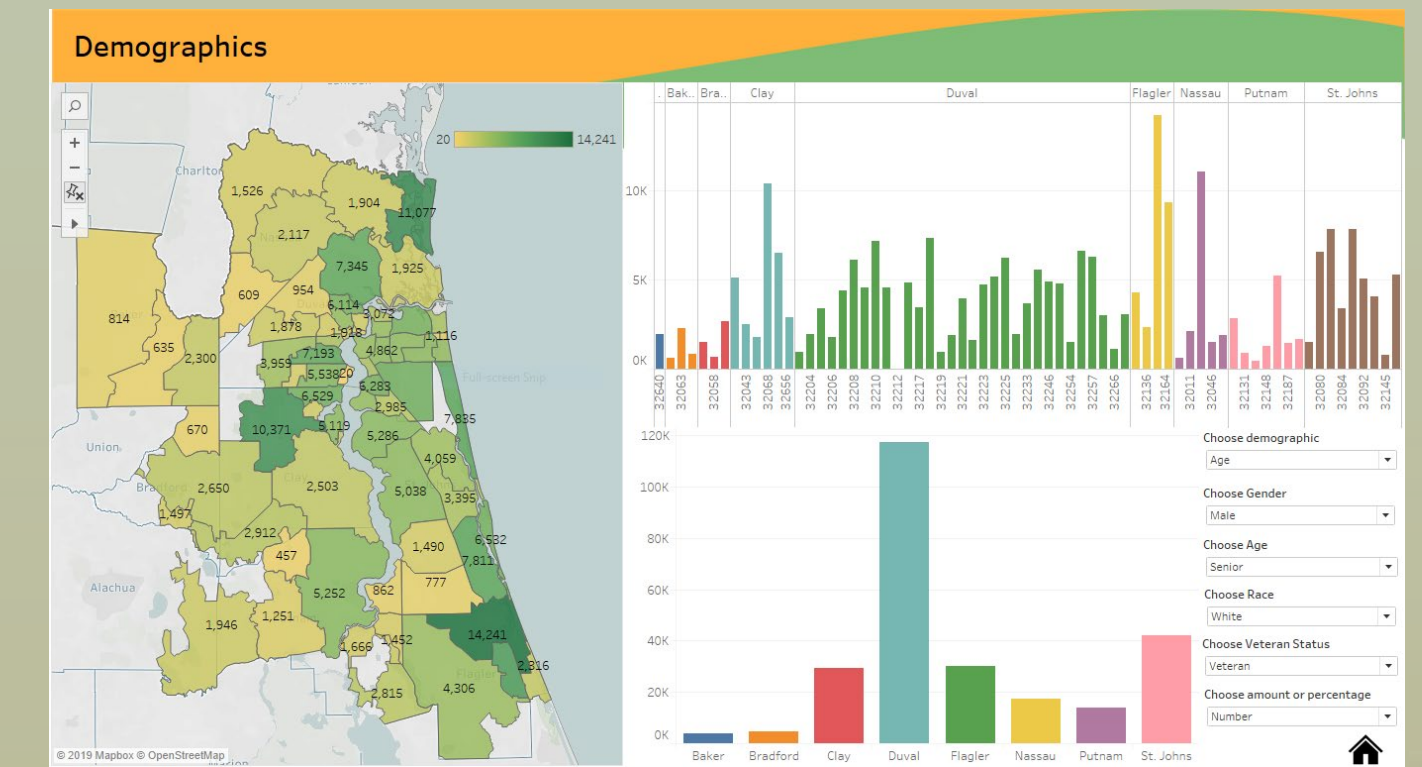
Integrating Disparate Datasets

Consolidating Data Sources:

- Regional socio-demographic data from Census track and ALICE reports
- Food donors and distributors data from Feeding Northeast Florida
- Food insecurity and food desert research data from USDA and Feeding America

Aggregating census track reports to zip codes using ArcGIS

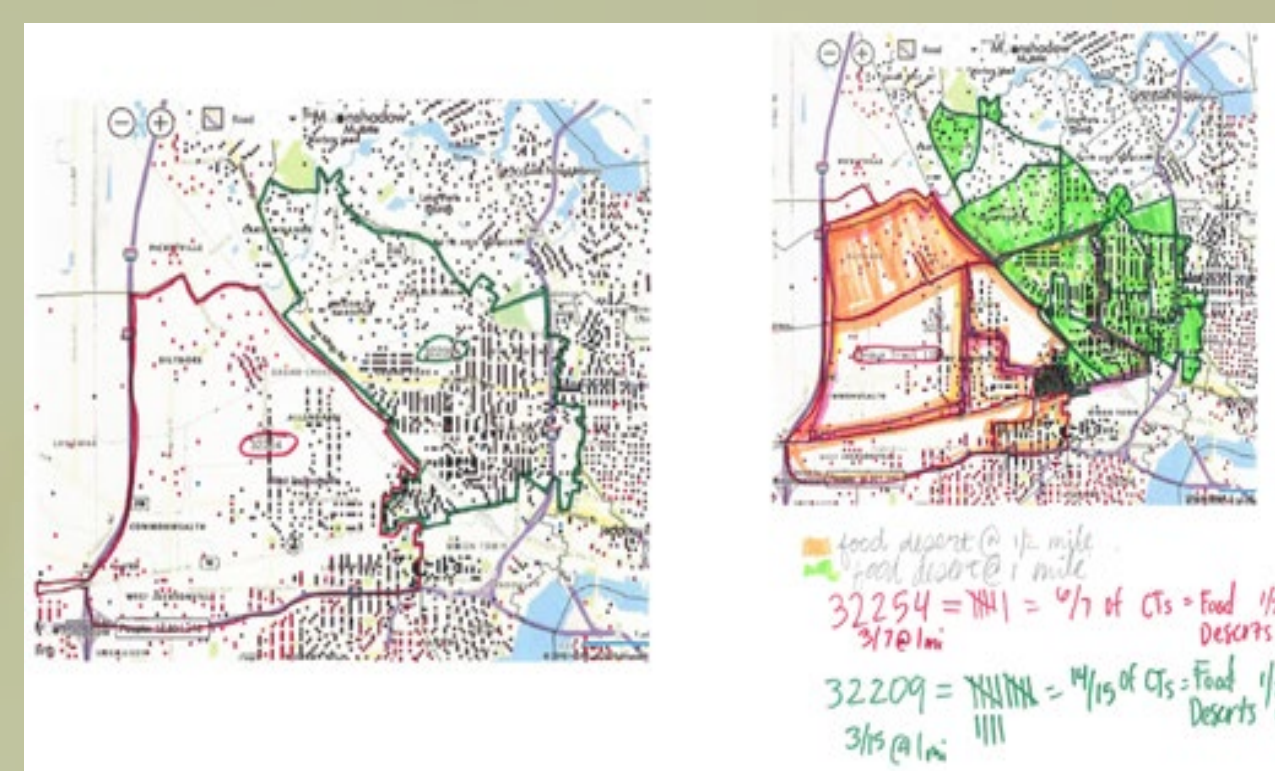
Converting donor and distributor agency address into geographic coordinates using Google Cloud Platform (GCP)



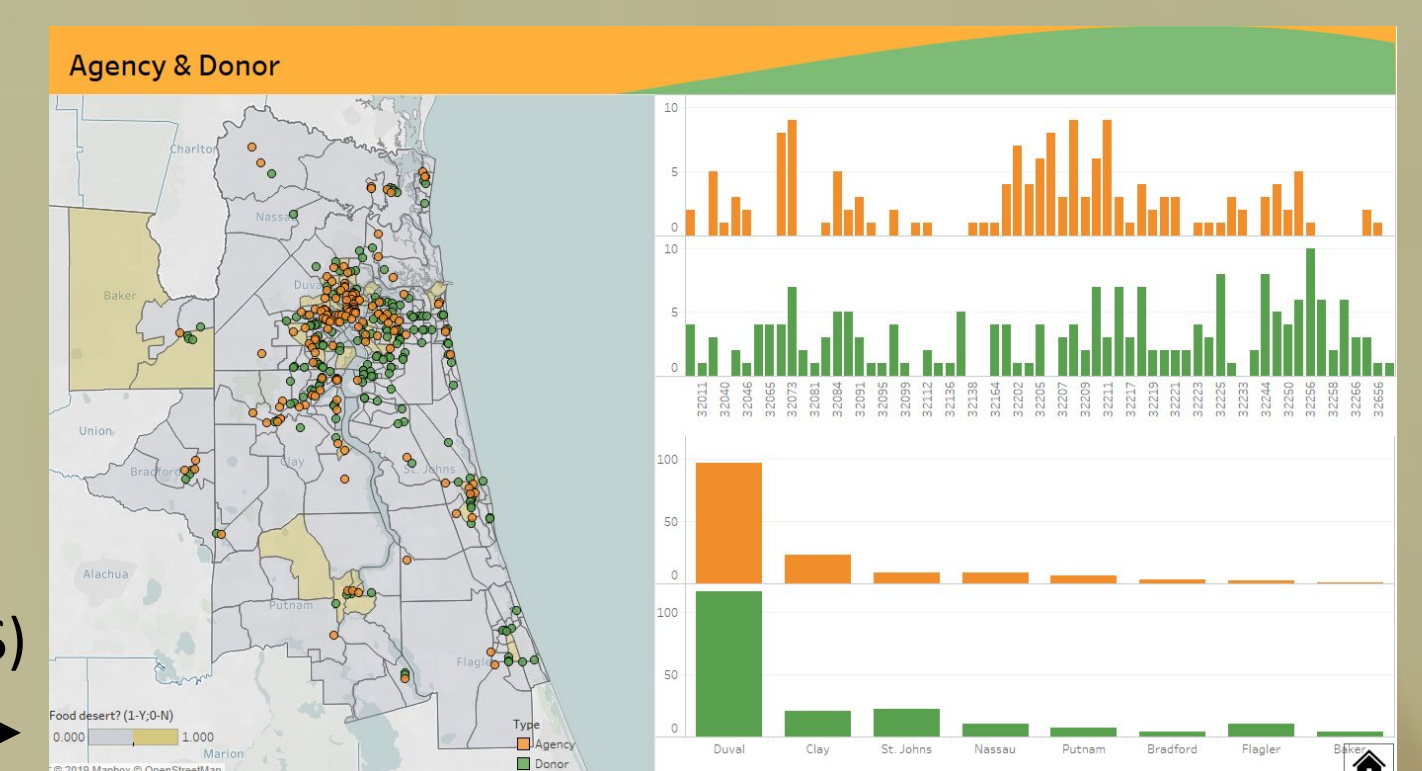
Supporting Grants and Operations Teams

Provide ability for **grants team** to identify areas in need and estimate demand for food

Provide ability for **operations team** to visualize demographic, food donors, and food distributor information.



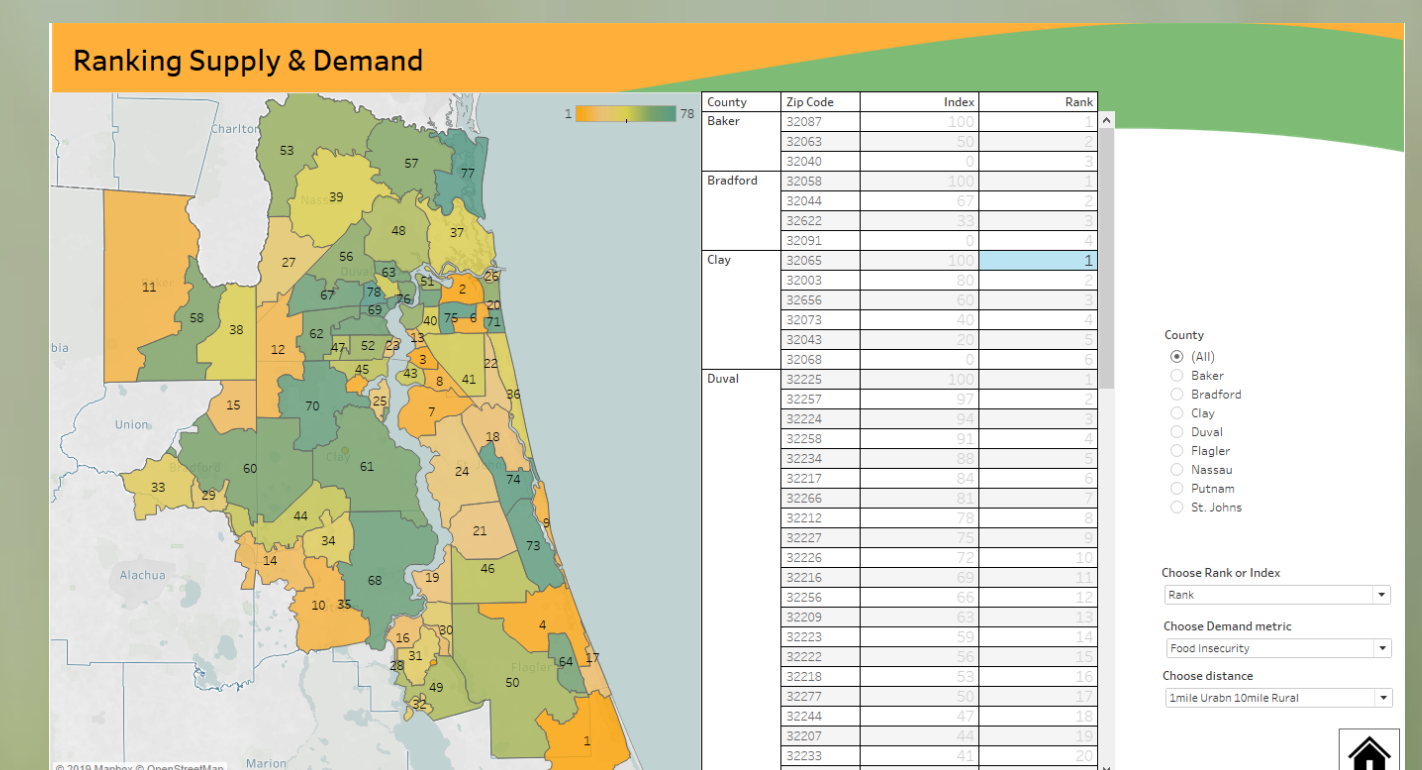
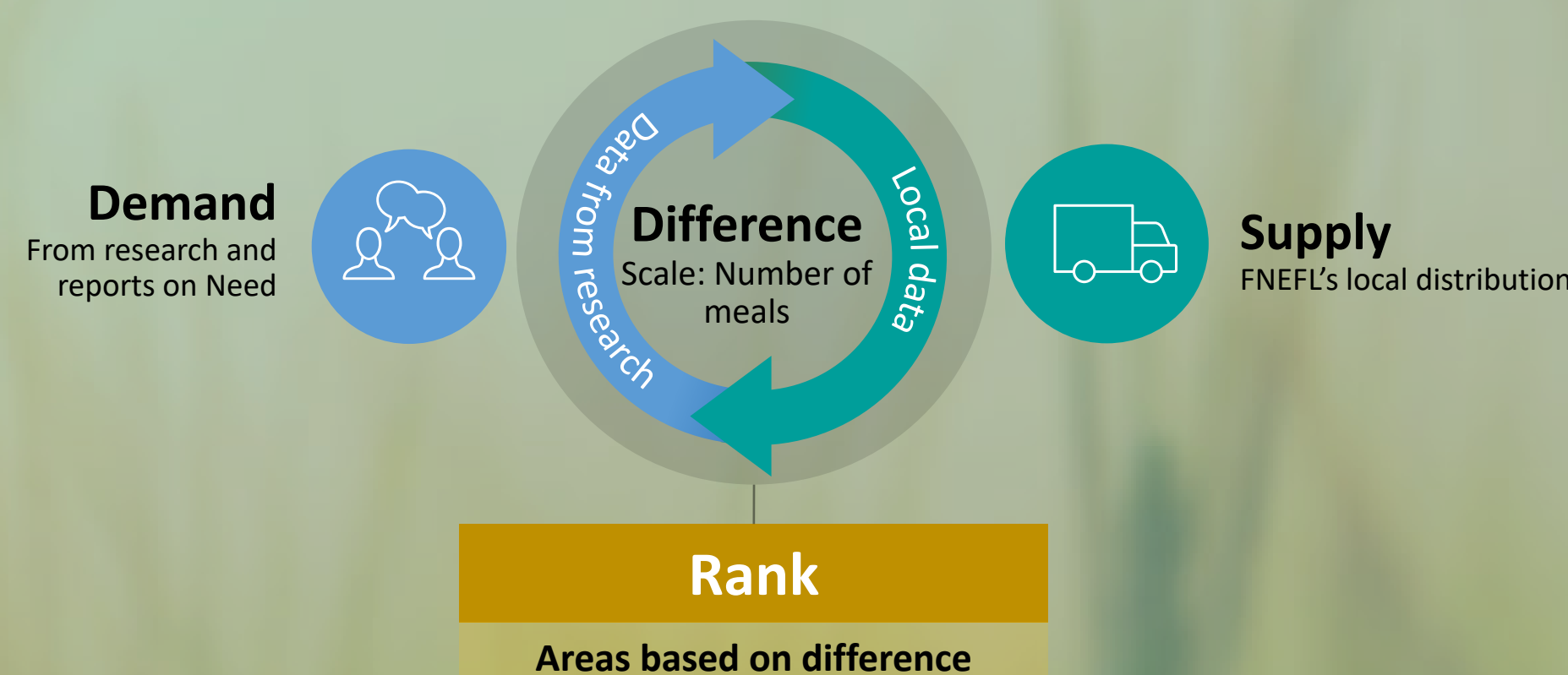
Digital Transformation Solution
 Moving from mapping on paper to a geographic information systems (GIS)



Asking Questions and Data Drill-Down

Ranking food desert regions based on **estimated demand and local supply of food.**

Ranking food desert regions based on **USDA research factors: low-income and low-access.**



References:

- Meal-Gap (2019). Map the Meal Gap - Food Insecurity in The United States. Feeding America. <https://map.feedingamerica.org/>. Accessed October 24, 2019.
- USDA-ERS (2019a). Definitions of food security. US Department of Agriculture, Economic Research Service. <https://www.ers.usda.gov/topics/food-nutrition-assistance/food-security-in-the-us/definitions-of-food-security/>. Accessed October 24, 2019.
- USDA-ERS (2019b). Documentation for Food Access Research Atlas. US Department of Agriculture, Economic Research Service. <https://www.ers.usda.gov/data-products/food-access-research-atlas/documentation/>. Accessed October 24, 2019.

Presenters:

- Abhishek Singh, M.S. Data Science Student, Syracuse University
- Abigail Conwell, B.A. Anthropology Student, University of North Florida
- Joseph Allen, M.S. Computer Science Student, University of North Florida
- Dan Richard, Associate Professor, Department of Psychology, University of North Florida
- Karthikeyan Umamathy, Associate Professor, School of Computing, University of North Florida
- Jess Goodkind, Grants & Research Manager, Feeding Northeast Florida
- Paul Bell, Grants & Research Manager, Feeding Northeast Florida
- Michael Neff, Chief Operating Officer & Chief Strategy Officer, Feeding Northeast Florida
- Lauri Wright, Assistant Professor, Nutrition and Dietetics, University of North Florida